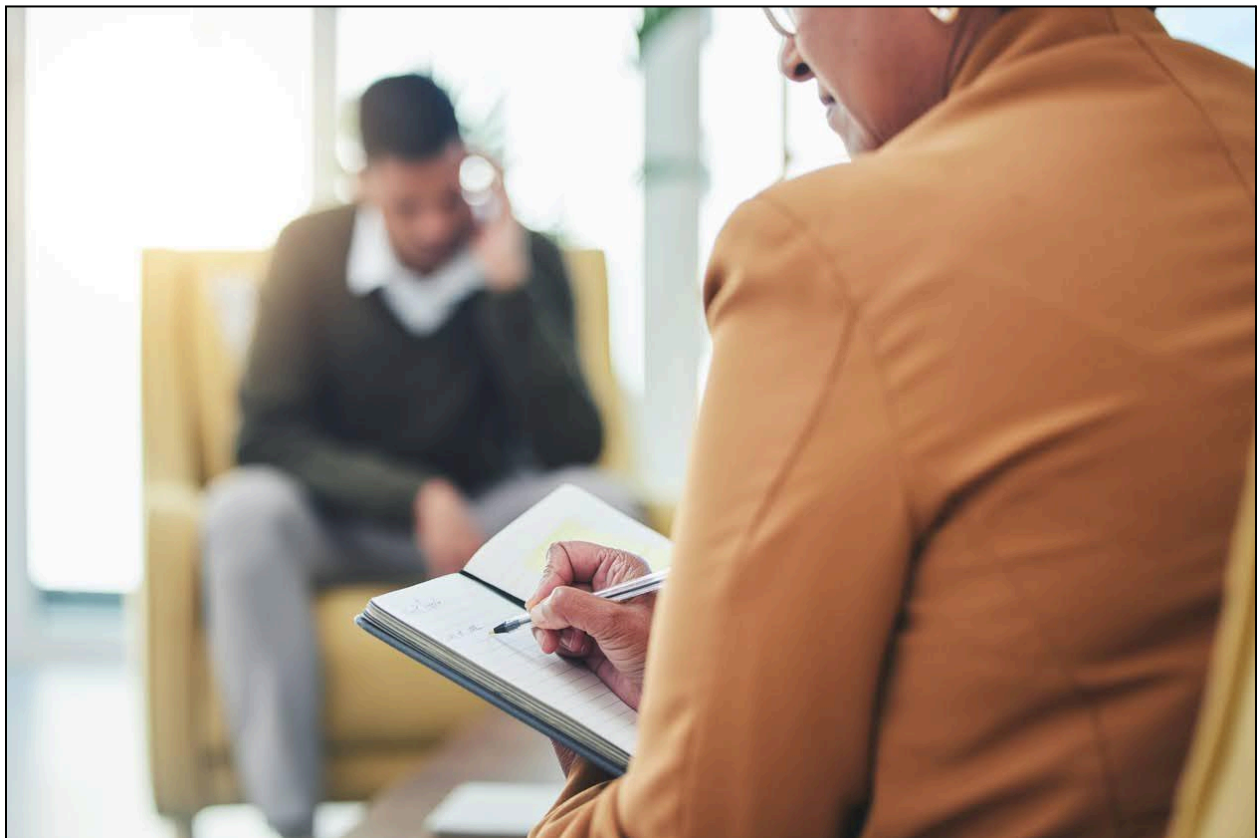


Personalised Speech Therapy Services Focused on Growth and Independence

Communication plays a vital role in a child's ability to learn, socialise, and express emotions. When speech, language, or communication challenges arise, early and professional support can make a meaningful difference. [Speech Therapy Services in Revesby](#) are designed to support children and young people in developing essential communication skills that help them feel confident and understood in everyday environments.



Understanding the Importance of Speech Therapy

Speech therapy supports more than just pronunciation or vocabulary. It helps children improve their ability to understand language, express thoughts clearly, and interact socially with others. Difficulties with speech or language can impact learning, behaviour, and self-esteem if left unaddressed. With structured therapy and consistent support, children can strengthen communication skills that support long-term development.

Key focus areas include:

- Improving speech clarity and sound production
- Supporting language understanding and expression

A Child-Centred and Individualised Approach

Every child develops at their own pace, and speech therapy should reflect that individuality. Therapy plans are tailored to each child's strengths, challenges, and goals. Sessions are engaging, supportive, and age-appropriate, creating a comfortable environment where children feel encouraged to participate and progress.



This approach helps by:

- Addressing specific communication needs
- Building confidence through positive reinforcement

Speech Therapy Services We Provide

A wide range of speech therapy supports are available to address various communication challenges. These may include speech sound difficulties, language delays, social communication challenges, and support with literacy-related skills. Speech Therapy Services in Revesby focus on practical outcomes that can be applied at home, school, and in social settings.

Services may support:

- Expressive and receptive language development
- Social interaction and communication skills



Supporting Families and Caregivers

Family involvement plays a key role in successful speech therapy outcomes. Therapists work closely with parents and caregivers to provide guidance, strategies, and ongoing feedback. This collaborative approach ensures skills learned in therapy are reinforced consistently across everyday routines and environments.

Family support helps to:

- Encourage progress outside therapy sessions
- Build confidence in supporting a child's communication needs

Experienced and Compassionate Speech Therapists

Speech therapy services are delivered by qualified professionals who understand the developmental needs of children and young people. Therapists use evidence-based strategies and maintain a warm, patient, and encouraging approach to therapy. Their goal is to support each child's communication journey with care and expertise.



Flexible Therapy Options for Ongoing Support

Accessibility and consistency are essential for effective therapy. Flexible service delivery options help families choose what works best for their schedule and child's needs. This may include clinic-based sessions, community support, or collaborative work with schools and other professionals.

Focusing on Long-Term Communication Success

Speech therapy is not only about immediate improvement but also about building skills that support long-term independence and participation. A holistic approach helps children develop communication strategies that grow with them and support success in education, relationships, and everyday life.

Conclusion

Clear communication opens doors to learning, connection, and confidence. With personalised support, structured therapy, and family involvement, children can make meaningful progress in their communication abilities. For trusted, child-focused Speech Therapy Services in Revesby, [Ascend Youth](#) is dedicated to supporting children and young people as they build strong communication skills and reach their full potential.

Follow Us

[Instagram](#)

Call Now:- (02) 9123 5987

Business Mail:- info@ascend.com.au

Our Location:- 6 Marco Ave, Revesby NSW 2212, Australia